

AirWalk Rural Solutions Experiences

April 2009

Rural US has plenty of un-served/underserved areas

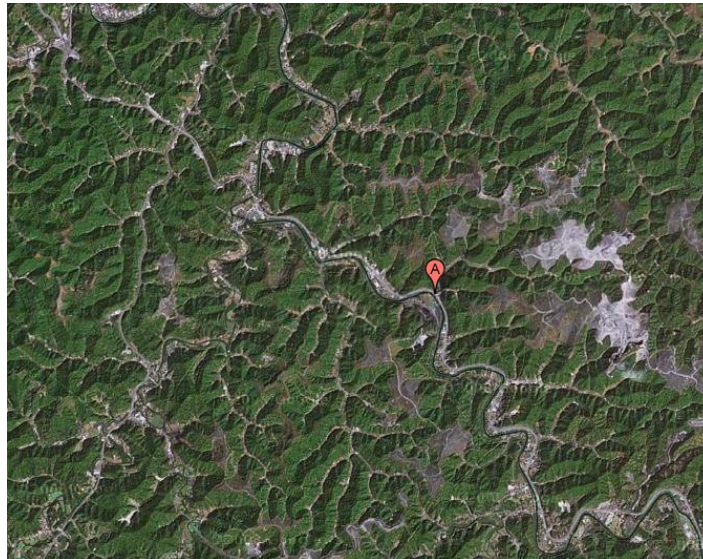
- Wireless operator realize potential grow for voice and data
- Roaming agreements with nationwide carries enhance offers
- Lower overall Capex and Opex vs wireline/DSL carries

AirWalk EVDO rev A Provides

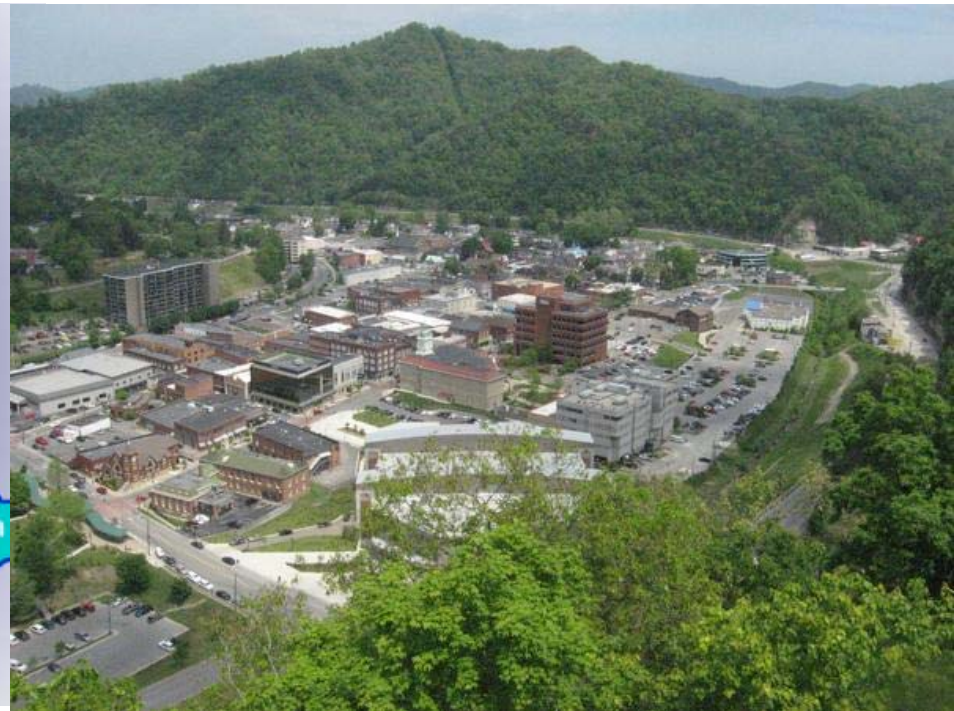
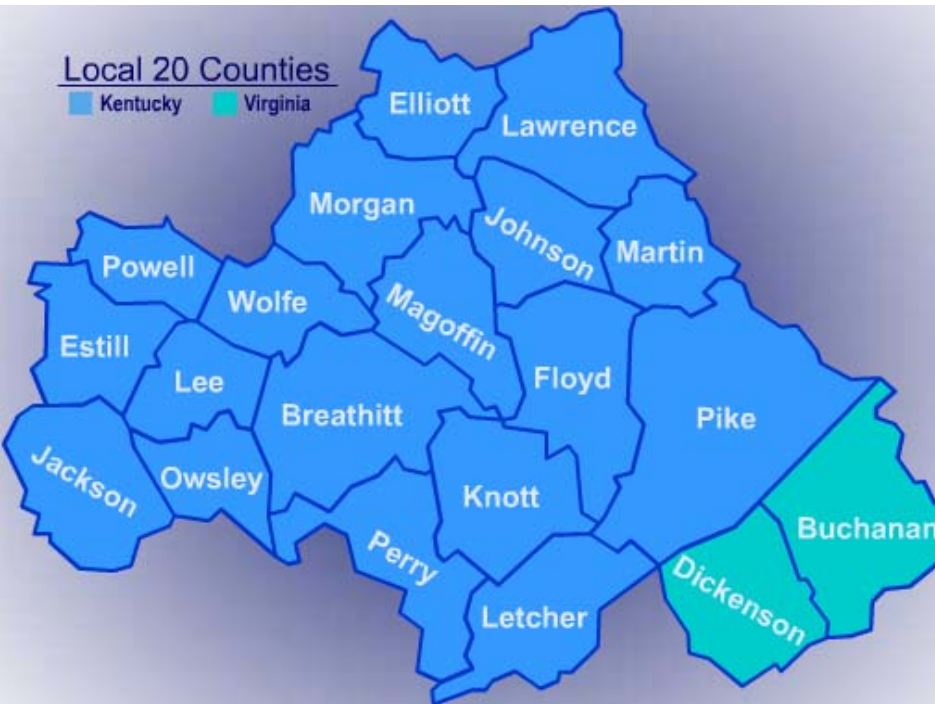
- Flat all-IP architecture
- Flexible product configurations
- Full 1xRTT & EVDO system features
- Lowest deployment and operating costs

Rural Carrier located in KY

Located in Eastern Kentucky, is a leading provider of high quality telecommunications products and services since 1991. It operates advanced cellular telephone and data services at affordable prices to local communities across Kentucky and Western Virginia

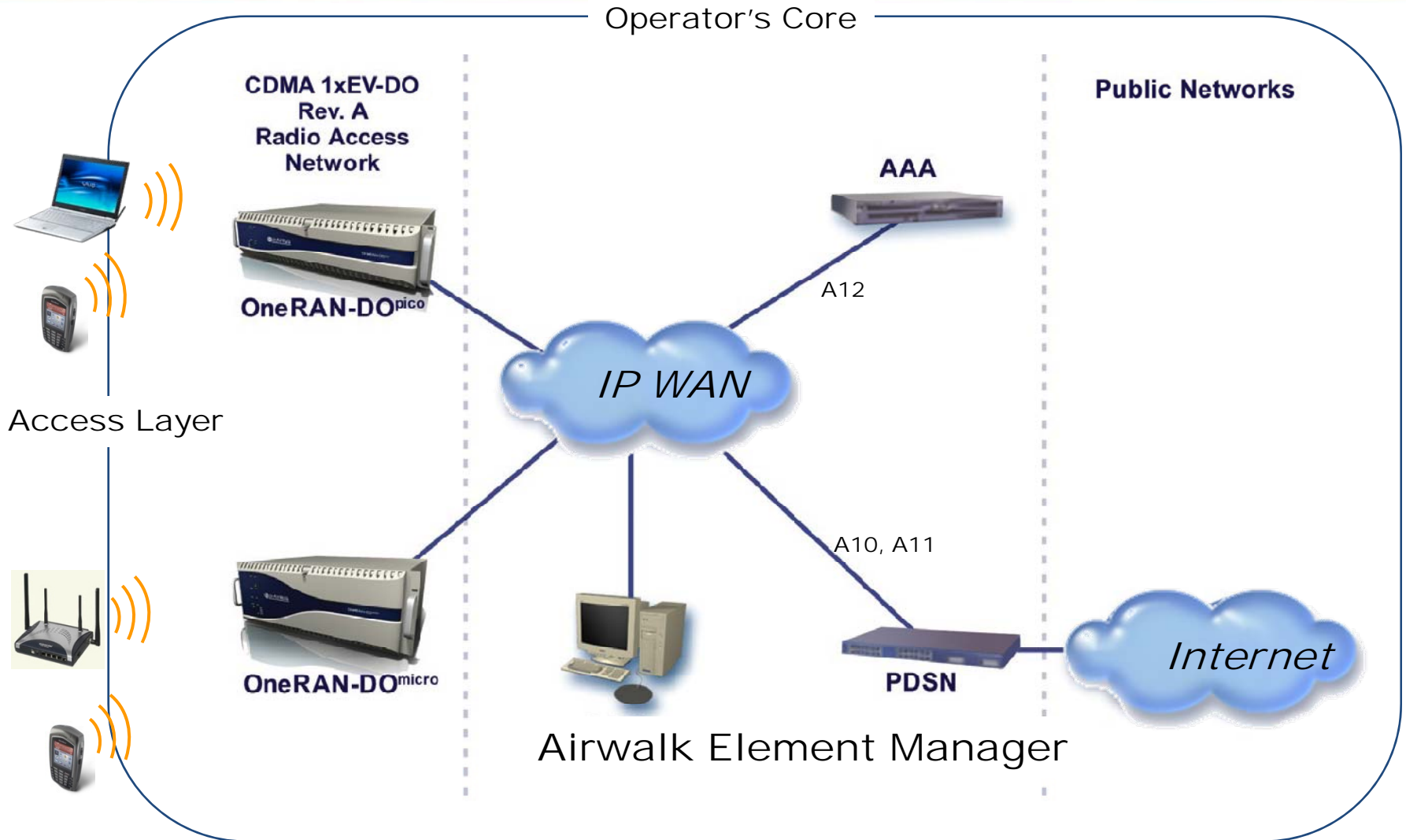


Provide coverage for 20 rural counties



EVDO Rev A as alternative for DSL

- Airwalk IP flat architecture was the ideal solution for EVDO deployment in the area
- Existing 1x sites retrofitted with Airwalk EVDO IP RAN
- No additional core equipment needed existing PDSN is used for Airwalk IP RAN
- Due to Capex and Opex savings, the carrier is able to offer unlimited data for \$39.00



EVDO Rev A as DSL replacement



Corporate user

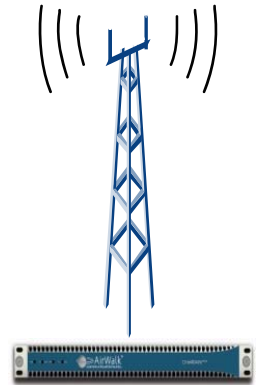


Home user



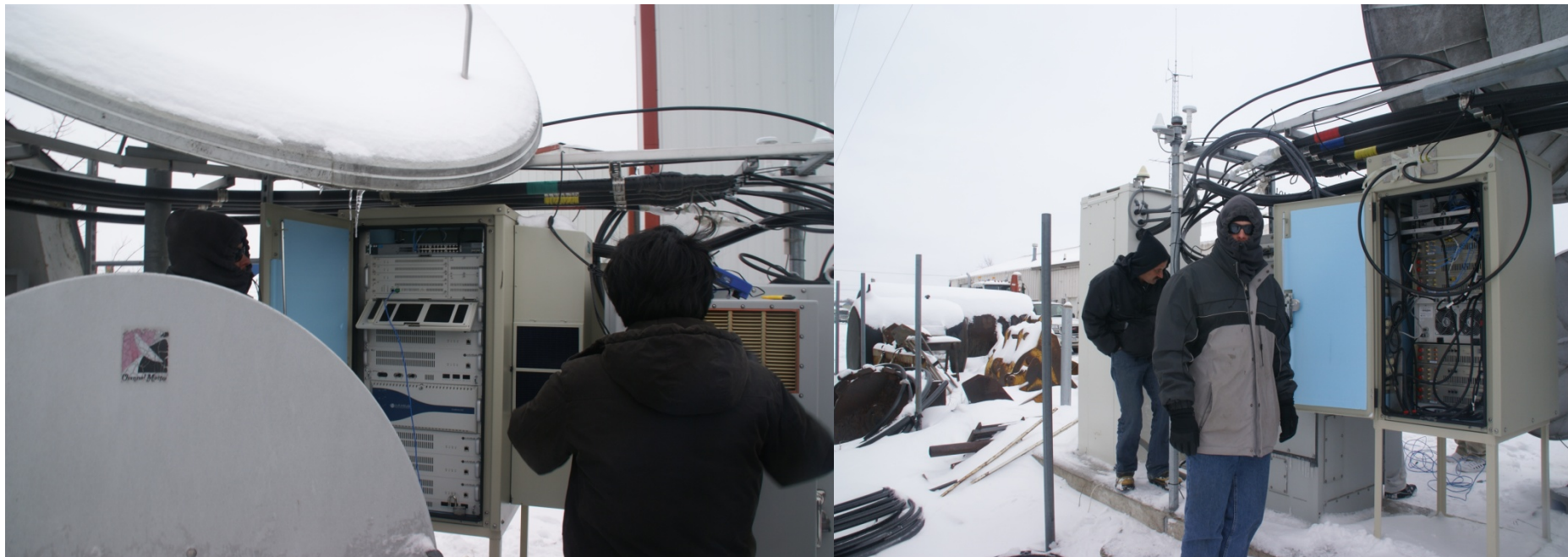
Benefits

- Integrated Wi-Fi router allows access to broadband data from anywhere at a home or office
- Four-port Ethernet switch provides a plug-and-play solution for networking multiple desktop and laptops
- Dual-band functionality (800/1900MHz) provides compatibility with networks worldwide
- 450MHz Single band unit
- High-speed data with up to 3.1Mbps downlink and 1.8Mbps uplink
- Receiver Diversity Antennas providing maximum coverage range and data throughput



EVDO
IP RAN
Cell Site

Proven operation in rough environment



Small Foot print, low power consumption, from 1FA to 3FA configuration and different power configurations



Gracias!

**AirWalk Communications Inc.
1830 N Greenville Ave.
Richardson, Texas 75081**