

CDG Handset Programs

Facilitating Time to Market and
Economies of Scale with
GHRC



CDMA2000 offers the most 3G Handsets

Close to 1500 devices commercialized

Many form factors

Multiple frequency bands: 450, 800, 1900, 2100



With all those handsets, what's the issue?

Lots of options and new applications coming all the time

An alphabet soup of new applications and features

LBS

JAVA

FLO

R-UIM

SMS

VOD

BREW

POC

DVB-H

WorldMode™

EV-DO
Rev. A

MMS

DRM



CDMA2000 Market Continues to Grow and Change....

Initial CDMA operators in 1990s came from developed markets

More than 125 new CDMA operators since 2003 – many from developing economies

Dramatic increase in international roaming, with features expected to work across borders



Newer and Small CDMA Operators often lack:

- **In-house terminal development teams**
- **Existing relationships with terminal suppliers**
- **Large volume requirements**

What was needed?

	Operators	Terminal Suppliers
Common Language (linguistically)	✓	✓
Common Language (technically)	✓	✓
Common Requirements	✓	✓
Reduced Operator-specific Variants		✓
Economies of Scale	✓	

New CDG Team

Global

Handset

Requirements for

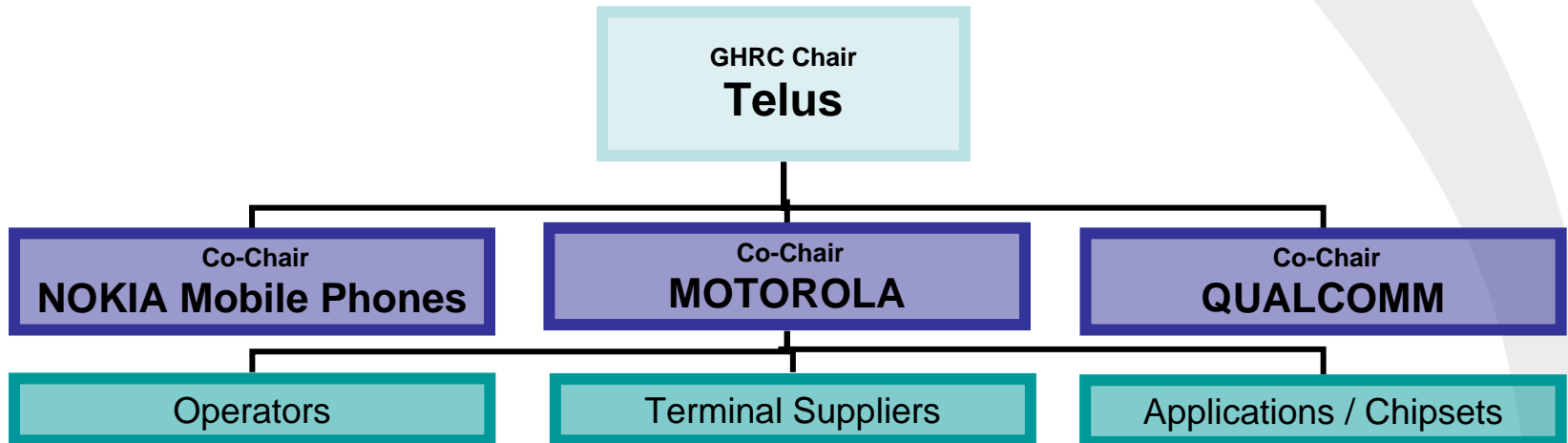
CDMA



GHRC



GHRC Team Formed in late 2004



GHRC Team First Priority



Global Handset Requirements for CDMA — CDMA2000 Voice, SMS, and Data

CDG Document 90

Version 2.0

24 January 2005

CDMA Development Group
575 Arlton Boulevard, Suite 560
Costa Mesa, California 92626
PHONE +1 888 800-CDMA
+1 714 545-5211
FAX +1 714 545-4801
<http://www.cdg.org>
cdg@cdg.org

Notice

Each CDG member acknowledges that CDG does not review the disclosures or contributions of any CDG member nor does CDG verify the status of the ownership of any of the intellectual property rights associated with any such disclosures or contributions. Accordingly, each CDG member should consider all disclosures and contributions as being made solely on an as-is basis. If any CDG member makes any use of any disclosure or contribution, then such use is at such CDG member's sole risk. Each CDG member agrees that CDG shall not be liable to any person or entity (including any CDG member) arising out of any use of any disclosure or contribution, including any liability arising out of infringement of intellectual property rights.

Requirements Document for Basic CDMA Terminal

- **Not a new standard – refers to existing 3GPP2, OMA, etc**
- **Covers voice, SMS and 1X data**
- **In use since 2005**



12+ Requirements Docs Completed

Designed to capture all the options that operators must consider

- Lists Mandatory, Highly Desirable and Optional Requirements
- Goal is to increase Ms and decrease HDs, Os



5. Provisioning Requirements

5.1 OTA Provisioning Functions (OTASP, OTAPA)

Req. #	Requirement	Category	Remarks	References	PRI Configurable
5.1.1	The device shall support OTA provisioning as defined in C.S0016-0 (OTASP, OTAPA).	M		C.S0016-0	
5.1.2	The device shall support OTA provisioning as defined in C.S0016-A (OTASP, OTAPA).	HD		C.S0016-A	
5.1.3	The device shall support OTA provisioning as defined in C.S0016-B (OTASP, OTAPA).	O	The manufacturer shall indicate what is the implemented standard version and protocols.	C.S0016-B	

5.2 NAM Requirements

5.2.1 NAM Programming Access

The IMSI is defined as the 15 digits code, composed by [MCC] + [MNC] + [MIN]. The device's NAM programming access shall be made in two distinct ways: SPC1 / OTSL and SPC2.



What's been achieved?

Using CDG's GHRC documents

- **CDMA operators have access to terminals they might not otherwise get**
- **Time to market has been reduced**
- **Economies of scale has improved**
- **CDMA terminal suppliers can more efficiently serve their customers**

Other GHRC commercial efforts

Africa Forum

Central Asia Forum

Mid-tier Terminal Group - CCSG



Thank You

dhind@cdg.org

